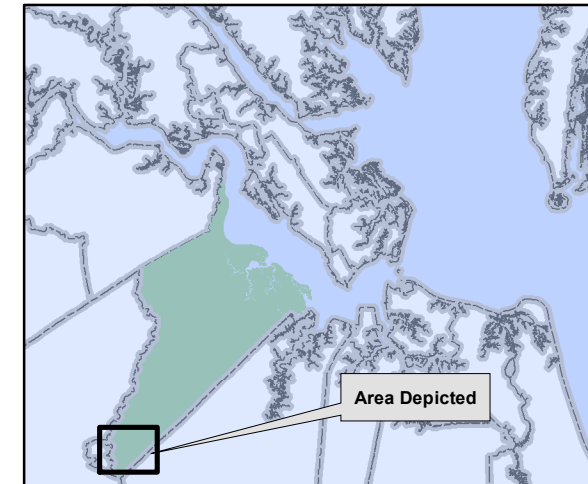


CAMPTOWN DEVELOPMENT SERVICE DISTRICT

Isle of Wight County, Virginia



Area Depicted

The Camptown Development Service District is a strategic growth area planned for future industrial development.

Existing industrial base includes: International Paper Mill, ST Tissue and Franklin Lumber. In 2019, M&M Milling announced and began operations at a \$2.3 million toll processing facility at the former Franklin Equipment property.

Stable residential communities. Affordable housing costs with median home value of \$90,400.

Average Vehicle Trips on Route 258 = 3,400
Average Vehicle Trips on Route 58 = 6,800

Innovative, fully-accredited public school system with an award-winning career and technical education program and graduation rates surpassing the state level.

Access to a regional workforce of over 840,000.

Easy access to the region's transportation network, including Route 58, Route 460 and Interstate 95.

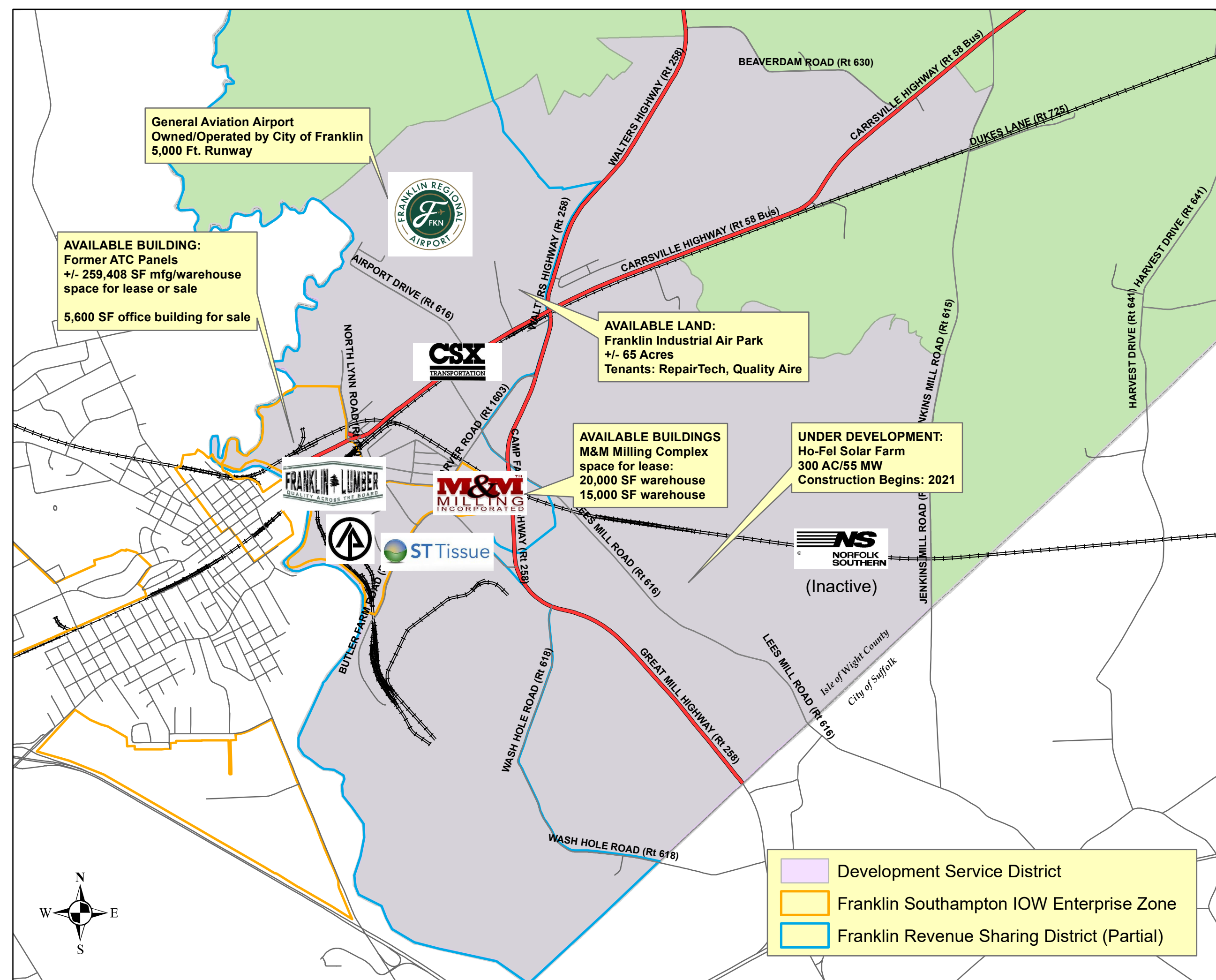
Lower your taxes - Isle of Wight County boasts one of the lowest real estate tax rates in Hampton Roads.

Nearby amenities include: Joe's Pizza & Pasta Palace, 7-Eleven and Bradshaw's Country Store. Additional restaurants and shops located in nearby Historic Downtown Franklin.



ISLE OF WIGHT COUNTY, VIRGINIA

For more information, please contact:
Isle of Wight Economic Development
(757) 356-1962
www.insidetheisle.com



General Aviation Airport
Owned/Operated by City of Franklin
5,000 Ft. Runway

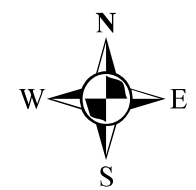


AVAILABLE BUILDING:
Former ATC Panels
+/- 259,408 SF mfg/warehouse space for lease or sale
5,600 SF office building for sale

AVAILABLE LAND:
Franklin Industrial Air Park
+/- 65 Acres
Tenants: RepairTech, Quality Aire

AVAILABLE BUILDINGS
M&M Milling Complex
space for lease:
20,000 SF warehouse
15,000 SF warehouse

UNDER DEVELOPMENT:
Ho-Fel Solar Farm
300 AC/55 MW
Construction Begins: 2021



Development Service District
 Franklin Southampton IOW Enterprise Zone
 Franklin Revenue Sharing District (Partial)